



Prince[®] XL Spool Gun

The most versatile pistol grip welding gun in the world, the **Prince[®] XL** spool gun provides 1 or 2 lb wire spool flexibility and a pistol grip design weighing less than 3 lbs.

Aluminum wire diameters from .030" - 1/16" can be fed with wire speeds up to 900 IPM. Connect the Prince[®] XL spool gun to any CV or CC power supply using the WC-1 Control or one of our simple interfaces to most any manufacturer's power supply.



EZ-Lock[®] 360° rotating barrels in 6", 12", and 18", straight or curved.

Uses **Python[®] gun consumables** and 1 or 2 lb spools.

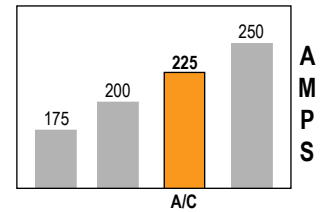
Can be **easily converted to a push pull gun** for use with a 12" spool in the Cobramatic[®] cabinet.

3/4 turn potentiometer provides easy control over a wide range of welding conditions.

See the accessories section for additional gas cups, barrels and contact tips.

Rated Output determined by the gun having an Air Cooled (A/C) barrel.

Duty Cycle 60%



Comes Complete With

- #2 Welding power cable
- .060" (1.5 mm) ID Contact tip
- #10 Finned gas cup

Most Popular Accessories

- Insulated drive roll kit (005-064X)
- Barrel insulator replacement kit (005-0696)
- Heavy duty spool gun brake spring for hard wires (005-0682)
- Spiral steel barrel liner kit (615-0XXX)
- Tip extender (621-0424)

MODEL NUMBER	RATED OUTPUT	WIRE FEED SPEED	WIRE DIAMETER CAPACITY	BOXED DIMENSIONS	BOXED WEIGHT
316-725 25 ft	255 Amps @ 60%	900 IPM	.023" to .045" solid and hard wire (.06 ~ 1.2 mm)	25 ft: 26 x 12 x 5 in (660 x 305 x 127 mm)	25 ft: 17 lb (7.7 kg) 50 ft: 29 lb (13.2 kg)
316-750 50 ft					
			.030" to 1/16" aluminum wire (.08 ~ 1.6 mm)	50 ft: 28 x 14 x 6 in (711 x 356 x 152 mm)	

GUN LEAD ASSEMBLY COMPONENTS

LENGTH	GAS HOSE	CONTROL CABLE	POWER CABLE	SNAKE SKIN
25 ft (4.6 m)	552-0202	005-0269	843-0484	931-0122
50 ft (7.6 m)	552-0203	005-0272	843-0485	931-0123

Spool Gun Adapter Selectors



005-0264
Generic, 24VAC
All Source



005-0676
Lincoln, 42VAC
14-Pin C/D Trigger



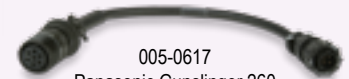
005-0261
Miller, 24VAC
14-Pin A/B Trigger



001-3066 MK200 Contactor Box



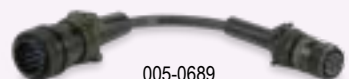
001-3062 WC-1 Spool Gun Control



005-0617
Panasonic Gunslinger 260



005-0206
ESAB MigMaster 250



005-0689
ThermalArc Fabricator